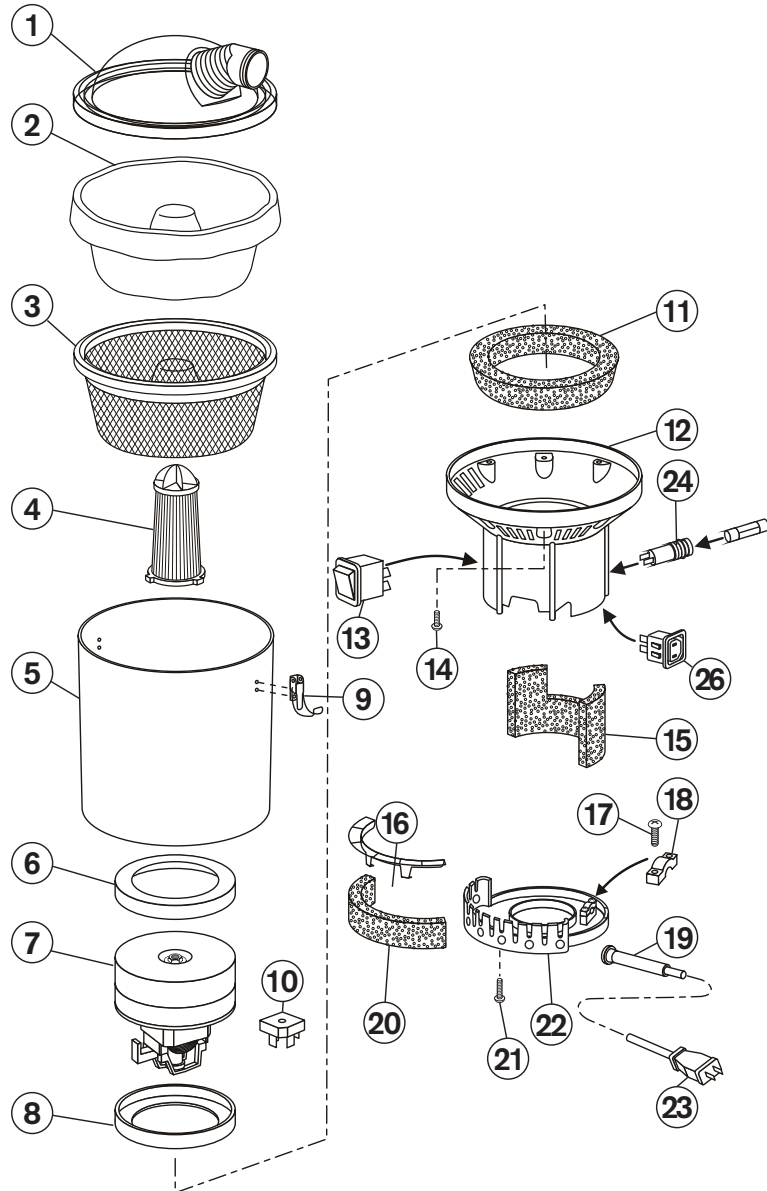


Superpro trans700 Parts Profile

Product Number: 200609-003A



Quote these part numbers when ordering spare parts

No.	Part Name	Part No.
1.	Dome lid	KC251
2.	Hypercone paper bag (Packet of 5)	AF101
3.	Hypercone dust bag	KC502HC
4.	Hypercone HEPA filter	KC270
5.	Main vacuum canister	KC252T
6.	Motor gasket	KC253
7.	Motor 120V 950W 2 stage flow through	UP243
8.	Trans motor sealing ring	KC253A
9.	Toggle latch	KC131
10.	Bridge rectifier 35A	UP246
11.	Intermediate noise insulation	PV254
12.	Intermediate housing	KC256
13.	Switch rocker 12A 250V 5E5	VS261
14.	Screw pan plastite 5x20	N/A
15.	Noise insulation motor	PV255
16.	Motor filter cage	KC264
17.	Screw pan plastite 3x12	PV299
18.	Cable clamp	KC262
19.	Cabled grommet	KC406
20.	External motor filter	PV259
21.	Screw 6x25	N/A
22.	Bottom cap	KC258
23.	Cable	UP109USA
24.	Fuse Holder	KC260
25.	Fuse 10A time lag	KC260F
26.	Power outlet C18	KC257

Specifications

Volts / Frequency: 120V~400Hz
 Motor: 120V 950W 2 Stage Flow Through
 Noise Level: 63dB(A) ± 3dB(A) (at 1.5m)
 Filtration: 4 stage, 99.99% efficiency at 0.3 micron
 Airflow Volume: 29 litres per sec
 Tank: Capacity: 5 litres
 Weight: 5.0kgs (excluding power cord and hose)

Technical specifications, part numbers and parts profiles are subject to change without notice.