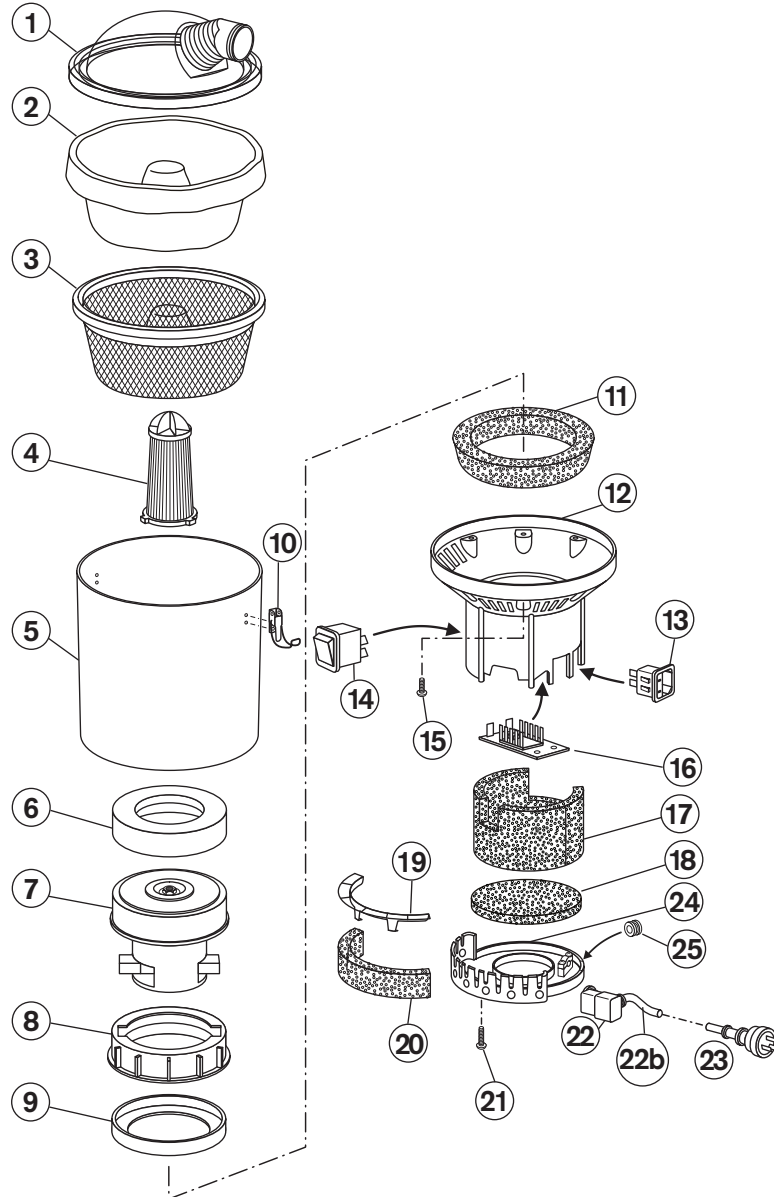


Superpro wispa700 Parts Profile

Product Number: 201008-001A



Quote these part numbers when ordering spare parts

No.	Part Name	Part No.
1.	Dome lid	KC251
2.	Hypercone paper bag (Packet of 5)	AF101
3.	Hypercone dust bag	KC502HC
4.	Hypercone HEPA filter	KC270
5.	Main vacuum canister	KC252W
6.	Motor gasket foam	KC253B
7.	Motor 240V 1300W single stage flow through	G118
8.	Motor spacer	KC253S
9.	Motor gasket	KC253
10.	Toggle latch	KC131
11.	Intermediate noise insulation	P254
12.	Intermediate housing 1 hole	KC256HC
13.	Power inlet hot condition C16	KC257HC
14.	Switch rocker intermediate12A 250V 5E4	VS261W
15.	Screw pan plastite 5x20	N/A
16.	Two speed PCB board V2	G2SV2
17.	Noise insulation motor	P255
18.	Noise insulation bottom lid	P255B
19.	Motor filter cage	KC264
20.	External noise insulation	P259
21.	Screw ST 6x25	N/A
22.	Connector right angle HC C15	PV257RHC
22b.	Short lead rubber 420mm 10A 3c 1mm ² (AU, NZ)	KC109SL
23.	Extension cord 18m 10A 3c 1mm ² (AU, NZ)	KC11118
24.	Bottom cap	KC258
25.	Hole plug	KC262P

Specifications

Volts / Frequency: 220-240V~50Hz
 Motor: 240V 1300W Single Stage Flow Through
 Noise Level: Normal mode 66dB(A) ± 3dB(A) (at 1.5m) / Wispa mode 62dB(A) ± 3dB(A) (at 1.5m)
 Filtration: 4 stage, 99.99% efficiency at 0.3 micron
 Airflow Volume: 32 litres per sec
 Tank: Capacity: 5 litres
 Weight: 5.0kgs (excluding power cord and hose)

Technical specifications, part numbers and parts profiles are subject to change without notice.