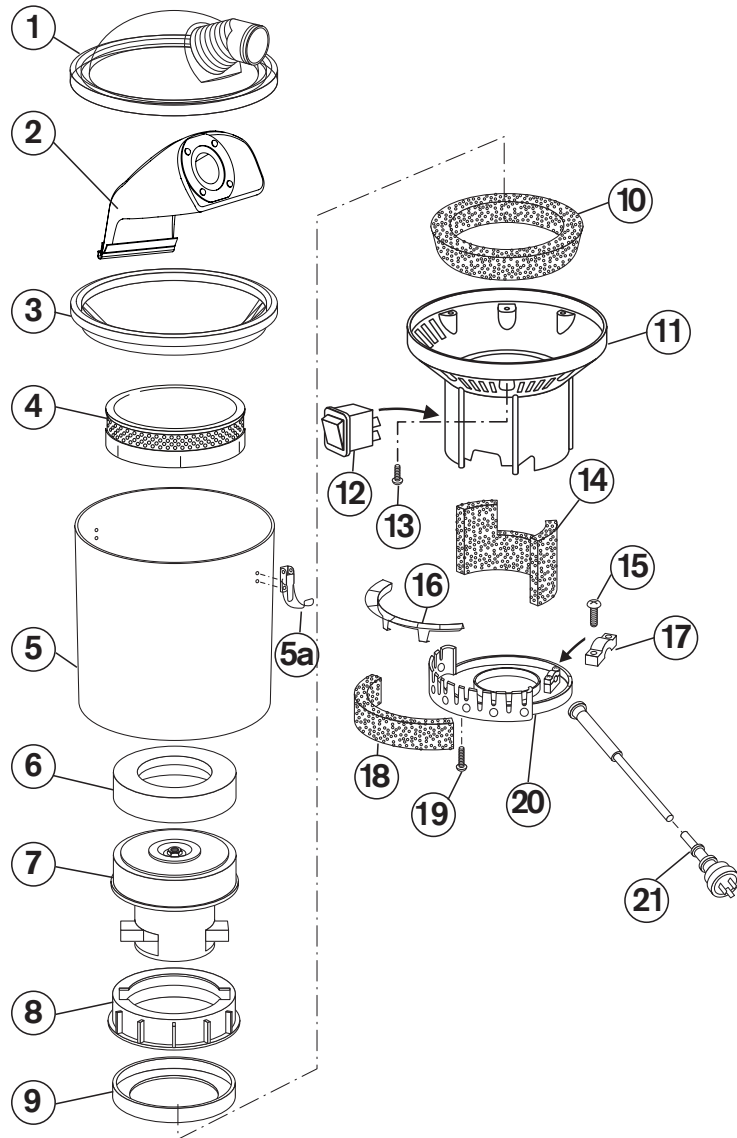


Product Number: 201311-001



Quote these part numbers when ordering spare parts

No. Part Name

- 1. Dome lid
- 2. Dust bag (reusable)
- 3. PU ring / Dust Bag Gasket
- 4. Micron HEPA Filter
- 5. Main vacuum canister
- 5a. Toggle latch
- 6. Motor gasket foam
- 7. Motor 240V 1300W single stage flow through
- 8. Motor spacer
- 9. Motor gasket
- 10. Intermediate noise insulation
- 11. Intermediate housing
- 12. Switch rocker 12A 250V
- 13. Screw pan plastite 5x20
- 14. Noise insulation motor
- 15. Screw pan plastite 3x12
- 16. Motor filter cage
- 17. Cable clamp
- 18. External motor filter
- 19. Screw ST 6x25
- 20. Bottom cap
- 21. Power cord 18m 10A 2c 1mm2 (AU, NZ)
Power cord UK 18m 10A 2c 1mm2 (UK, SG, IN, AE)
Power cord EU 18m 10A 2c 1mm2 inc grommet (EU)

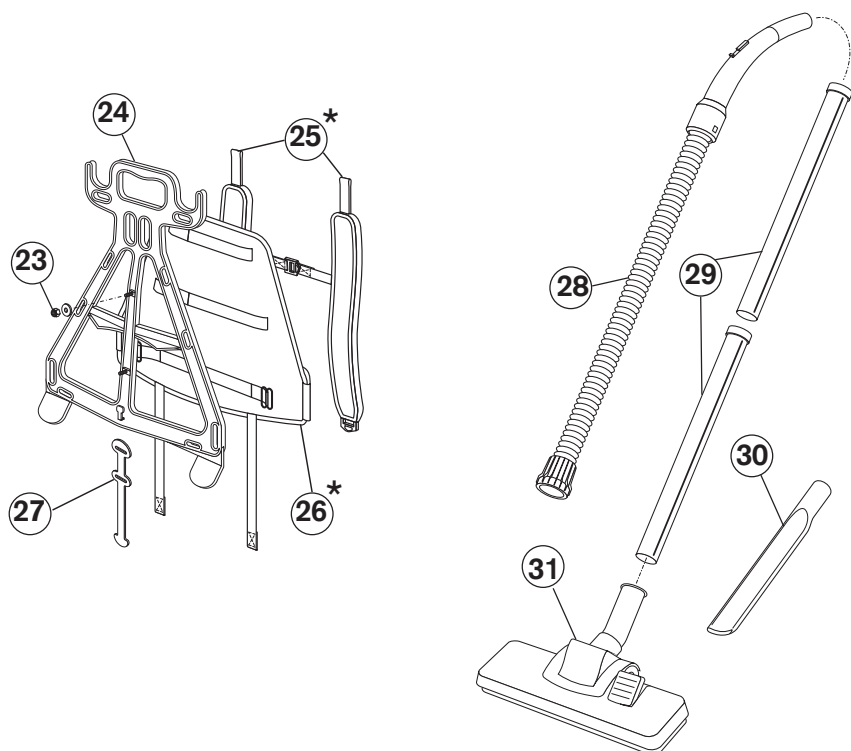
Part No.

- KC251
- KC129
- KC502R
- KC288
- KC252PU
- KC131
- KC253B
- G118
- KC253S
- KC253
- PV254
- KC256PU
- VS261C
- N/A
- PV255
- PV299
- KC264
- KC262
- PV259
- N/A
- KC258
- KC108
- UP108JCUK
- KC108EU

Specifications

Volts / Frequency: 220-240V~50Hz
 Motor: 1300W Single Stage Flow Through
 Noise Level: 66dB(A) ± 3dB(A) (at 1.5m)
 Filtration: 3 stage
 Airflow Volume: 39 litres per sec

Bag: Capacity: 4 litres
 Weight: 4.6kgs (excluding power cord and hose)
 Vibration Level: ≤2.5m/s²
 Warranty: 2 years on body and motor



Quote these part numbers when ordering spare parts

No.	Part Name	Part No.
23.	Bolt 5x20	N/A
	Nut 5mm nyloc	
	Washers 3/16 x 3/4 & 3/16 x 7/16	
24.	Carrying frame	KC120
25.	Shoulder strap pair purple	KC121PU
26.	Back support padding	KC263
*	Part No. 25 & 26 can be purchased as a combined part	KC121KC263PU
27.	Cord restraint	KC268
28.	Hose complete 32mm 1.2m	KC32PRO
29.	Two piece wand 32mm plastic wand	KC9092TH
30.	Crevice tool 32mm	KC911
31.	Combination floor tool	KC908W

Optional Extras

32.	Combination floor tool	UA908
33.	Bottom plate (suits combination floor tool)	UA9272
34.	All purpose floor tool	UA917H
35.	Disposable dust bag (packet of 5)	KC287SMS
36.	Plug in RCD adaptor	UP112PB
37.	Turbo head	UA926
38.	Metal bent hand piece	UA913M
39.	Combination floor tool with wheels	UA908W
40.	Extendable wand (Note: Not suitable for commercial use)	KC909

Optional Extras - These parts do not come with the machine, however can be purchased separately.

32	33	34	35	<div style="border: 1px solid black; padding: 5px; width: fit-content; margin: 0 auto;"> 40 <small>NOTE: Not suitable for commercial use</small> </div>
36	37	38	39	



Advanced 3 Stage Filtration

This advanced filtration system improves indoor air quality by filtering air at 3 stages.



Lightweight and Compact

The compact design allows for outstanding mobility and performance at just 4.6kgs (excluding power cord and hose) this lightweight machine provides maximum comfort.



Greater Productivity

Large bag capacity results in greater productivity.